

---

# *TTsuite* **MOST**

---

A Scalable Framework for MOST System Testing

---

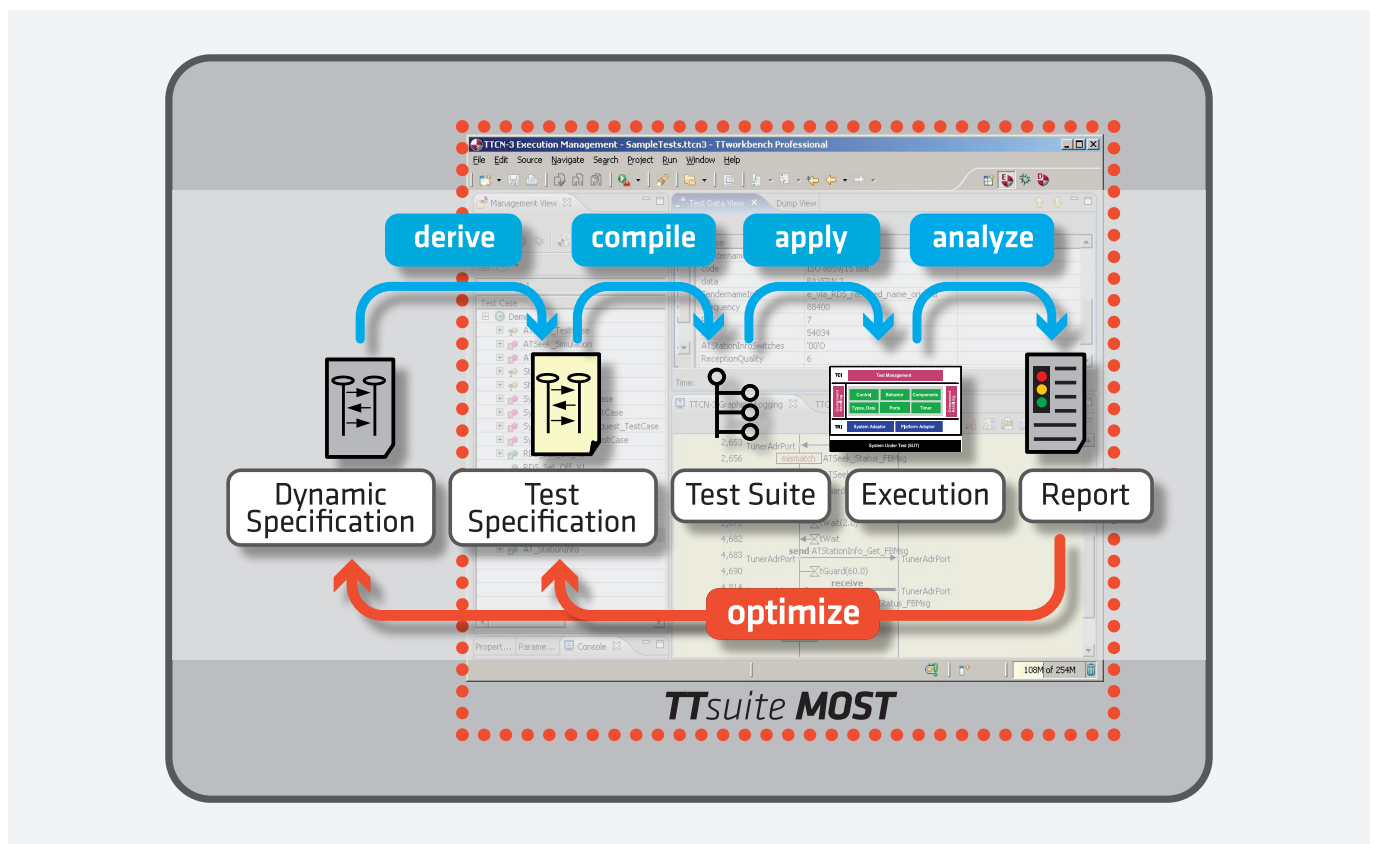


# TTsuite MOST

## A SCALABLE FRAMEWORK FOR MOST SYSTEM TESTING

TTsuite MOST provides users with an easy-to-use platform, allowing them to carry out tests and simulations for systems of varying complexity. This tool is based on the standardised test description language TTCN-3 and uses the GFT-format (Graphical Presentation Format of TTCN-3) for defining, visualising and documenting the tests.

TTsuite MOST helps to speed up your development cycles



### Features:

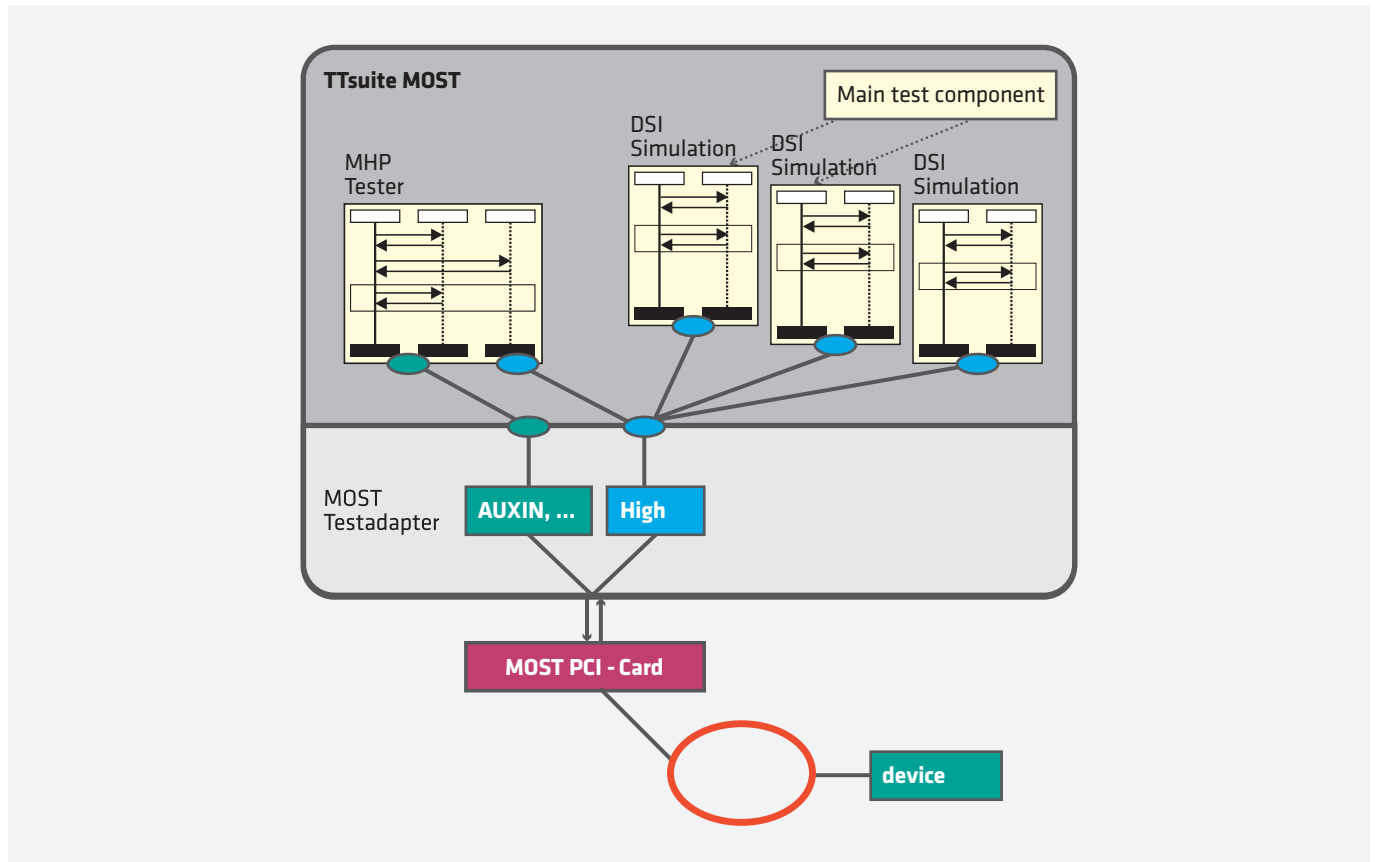
- Developed for MOST25, MOST50 ePHY and MOST150 projects
- MOST Control channel ports
- Direct FunctionCatalog import
- Full MOST Bus administration
- MOST Synchronous channel support

- MOST Asynchronous channel support
- MOST Spy (Control Channel and Async Channel) support
- MOST High Protocol support
- MOST High Protocol frame based testing support
- MOST150 MEP support
- Unique reporting on different levels
- MOST Stress Testing support

**In addition to the standard system, RUETZ SYSTEM SOLUTIONS also offers test adapters for:**

- CAN Bus, RS232, GPIB, HTTP, FTP, SMTP, POP3, SNMP and also TCP and UDP
- as well as ready-to-use test suites and development of test suites according to customer specification
- Interface to HP Quality Center® / Test Director®

## Test Scenario: MOST High Testing



### Details:

#### Direct FunctionCatalog import

#### Full MOST Bus administration

- Power management
- Networkmaster and Networkmaster shadow
- Central Registry and Decentral Registry
- MOST Asynchronous channel support

#### MOST Synchronous channel support

- Simulation of sinks
- Simulation of sources

#### MOST Asynchronous channel support

- MOST High Port enables sending and receiving based on MOST

#### MOST control channel ports for TTCN-3

- fblockPort addresses FunctionBlocks
- fblockSimPort simulates FunctionBlocks
- amsPort addresses devices
- spyPort enables SPY functionality

#### Additional Functions

- Filter for MOST control channel ports
- Dispatcher for received messages
- BroadCast / GroupCast

### Reporting

- Reporting on different levels of detail in MOST analysis style
- Summary of test results

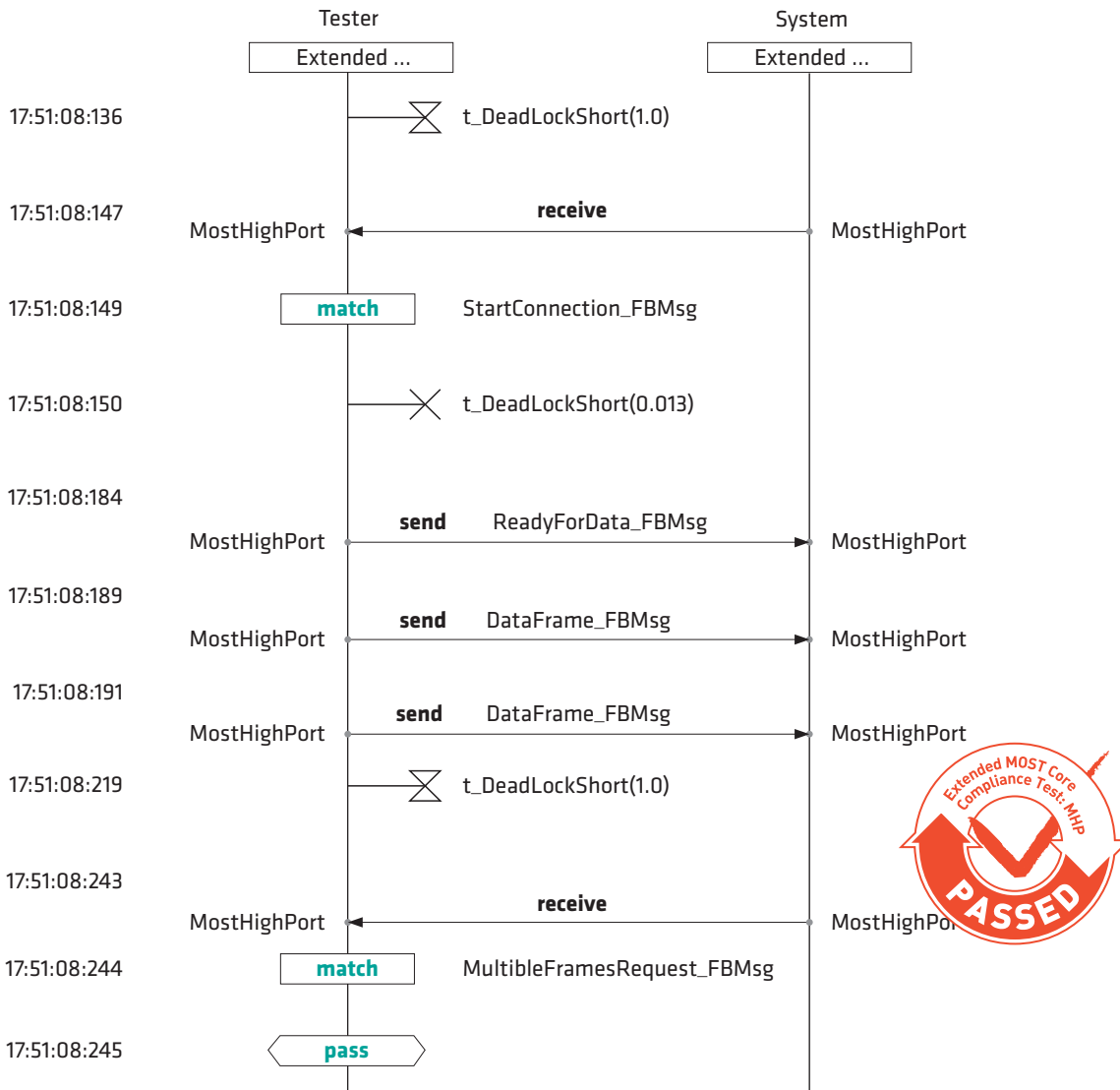
### System Requirements and MOST Interfaces

- Standard PC 2 GB RAM / Windows XP, Java JRE,
- Supported MOST Bus Interfaces
- SMSC OL V5,
- SMSC OL3025o
- SMSC OL3050e
- SMSC OL3150o
- SMSC PCI Tool Kit for ePhy or oPhy
- Softing EDICNET MOST

### Available official Test Suites

- MOST Profile AUXIN Compliance Test Specification
- MOST Profile ConnectionMaster Compliance Test Specification
- MOST Extended Core Compliance Test Specification MOST High Protocol
- Automotive Application Recommendation for MOST Core Functionality Part 2

# TEST REPORT EXAMPLE: MOST HIGH TESTING



**MOST**

**RUETZ  
SYSTEM SOLUTIONS**

Walter-Gropius-Straße 17  
D-80807 Munich  
T +49 / 89 / 200 04 13-0  
F +49 / 89 / 200 04 13-99  
www.ruetz-system-solutions.com